



Department of Public Works
Engineering Division
 Robert F. Phillips, P.E., City Engineer

City-County Building, Room 115
 210 Martin Luther King, Jr. Boulevard
 Madison, Wisconsin 53703
 Phone: (608) 266-4751
 Fax: (608) 264-9275
engineering@cityofmadison.com
www.cityofmadison.com/engineering

Deputy City Engineer

Gregory T. Fries, P.E.

Deputy Division Manager

Kathleen M. Cryan

Principal Engineer 2

Christopher J. Petykowski, P.E.
 John S. Fahrney, P.E.

Principal Engineer 1

Christina M. Bachmann, P.E.
 Mark D. Moder, P.E.
 Janet Schmidt, P.E.

Facilities & Sustainability

Jeanne E. Hoffman, Manager
 Bryan Cooper, Principal Architect

Mapping Section Manager

Eric T. Pederson, P.S.

Financial Manager

Steven B. Danner-Rivers

June 14, 2019

NOTICE OF ADDENDUM
 ADDENDUM NO. 1
 CONTRACT NO. 8299

N. BASSETT STREET ASSESSMENT DISTRICT – 2019

Revise and amend the contract document(s) for the above project as stated in this addendum, otherwise, the original document shall remain in effect.

SPECIAL PROVISIONS:

ADD TO: ARTICLE 500 SEWER AND SEWER STRUCTURES GENERAL

If sanitary sewer is replaced before existing water main is abandoned, a temporary water supply system shall be installed and maintained until the new water main is installed and put into service and shall be paid under BID ITEM 70110 TEMPORARY WATER SUPPLY SYSTEM.

PROPOSAL:

See below for a summary of items that have been removed, added or revised. Refer to the proposal for updated quantities. See proposal on bidexpress.com.

ITEMS:

Action	Bid Item	Description
MODIFY	70101	FURNISH AND INSTALL STYROFOAM
ADD	70110	TEMPORARY WATER SUPPLY SYSTEM

PLANS:

Remove and insert revised plan sheets as noted below.

Remove and replace sheets U1-U2: No sewer design change, but sheets revised to reflect changes in water main design.

Remove and replace sheets W1-W3: Sheets revise to adjust proposed water main profile depths to accommodate sanitary laterals, added notes for water lateral adjustments as required, and to include additional insulation.

Please acknowledge this addendum on page E1 of the contract documents and/or in Section E: Bidder's Acknowledgement on Bid Express.

Electronic version of these documents can be found on the Bid Express web site at:

<http://www.bidexpress.com>

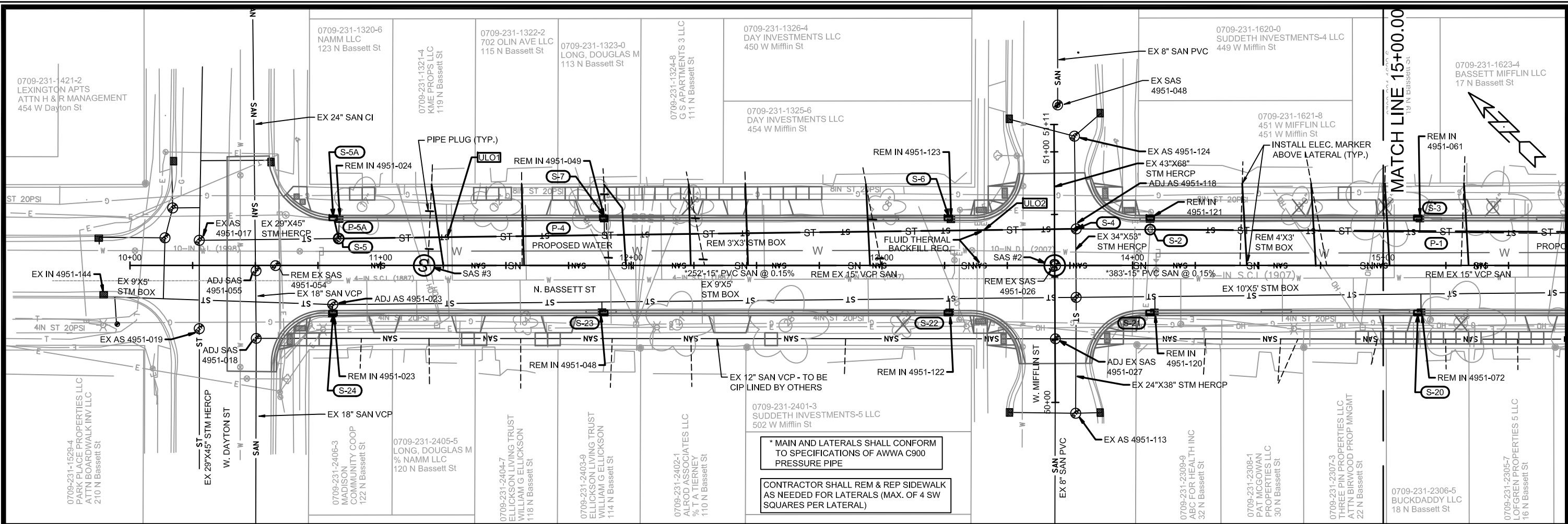
If you are unable to download plan revisions associated with the addendum, please contact the Engineering office at 608-266-4751 receive the material by another route.

Sincerely,

A handwritten signature in black ink, appearing to read "Robert Phillips". The signature is written in a cursive style with large, looping letters.

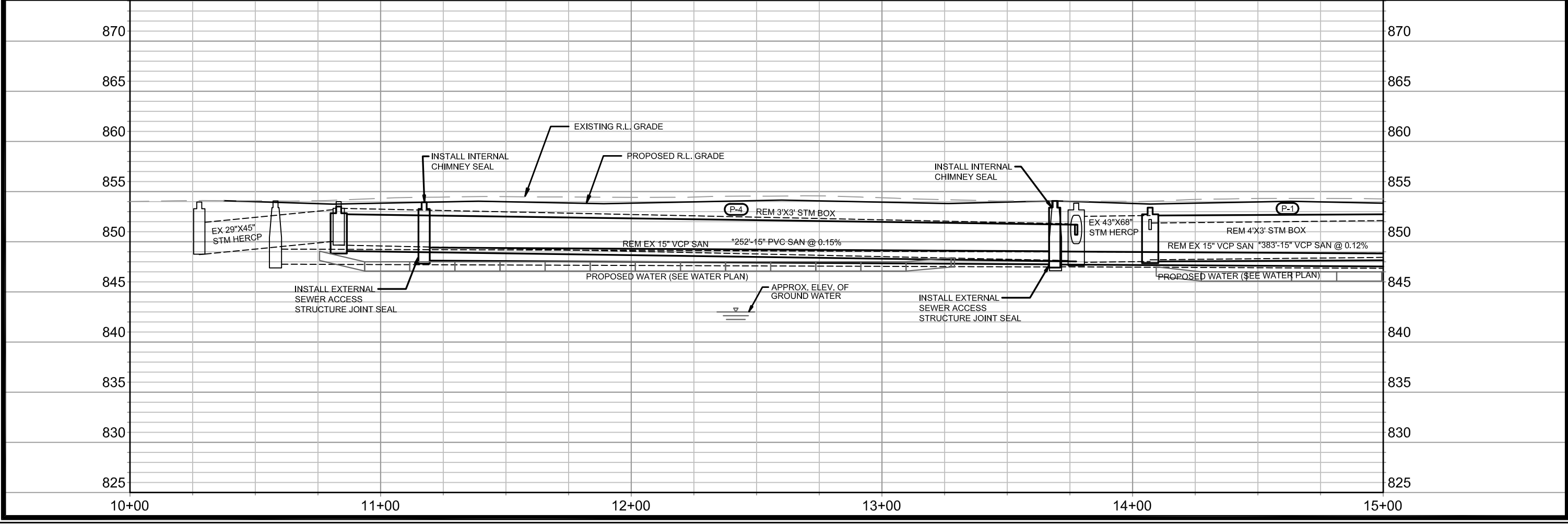
Robert F. Phillips, P.E.
City Engineer

RFP:JMW



* MAIN AND LATERALS SHALL CONFORM TO SPECIFICATIONS OF AWWA C900 PRESSURE PIPE

CONTRACTOR SHALL REM & REP SIDEWALK AS NEEDED FOR LATERALS (MAX. OF 4 SW SQUARES PER LATERAL)



REPRINT FOR WATER REV.	6-14-19	KDF
MARK	REVISION	DATE
BY	BY	BY
11987	11987	U-1

11987


MADISON, WI

CONTRACT NO: 8299

UTILITY PLAN AND PROFILE

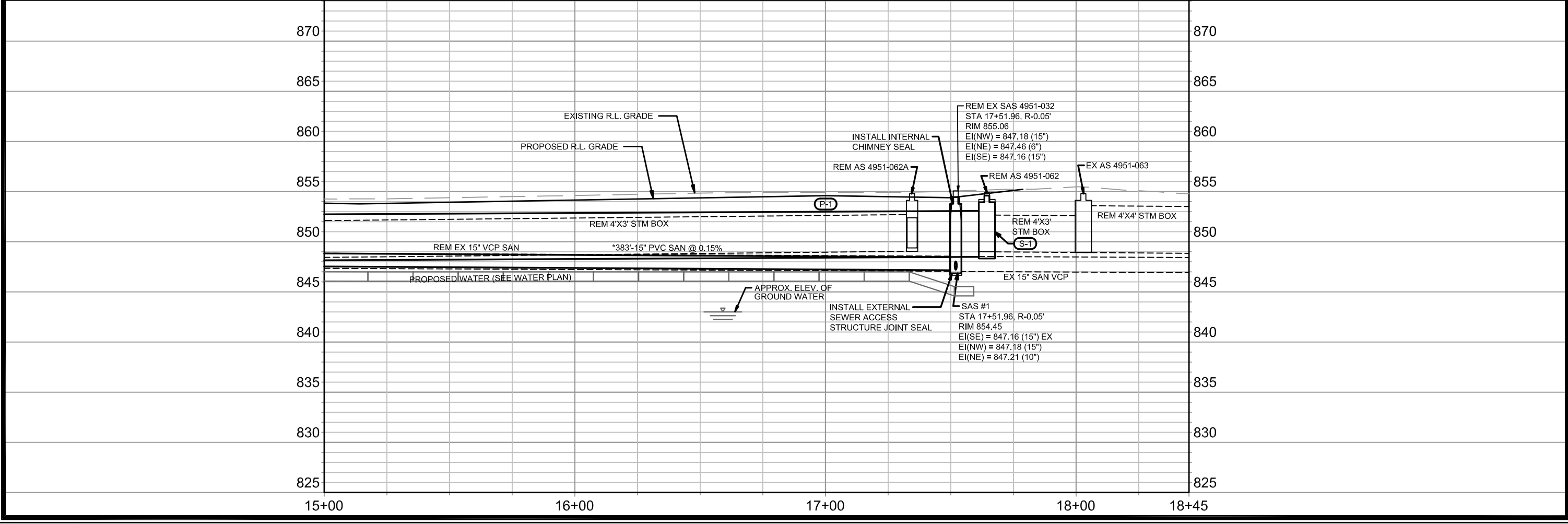
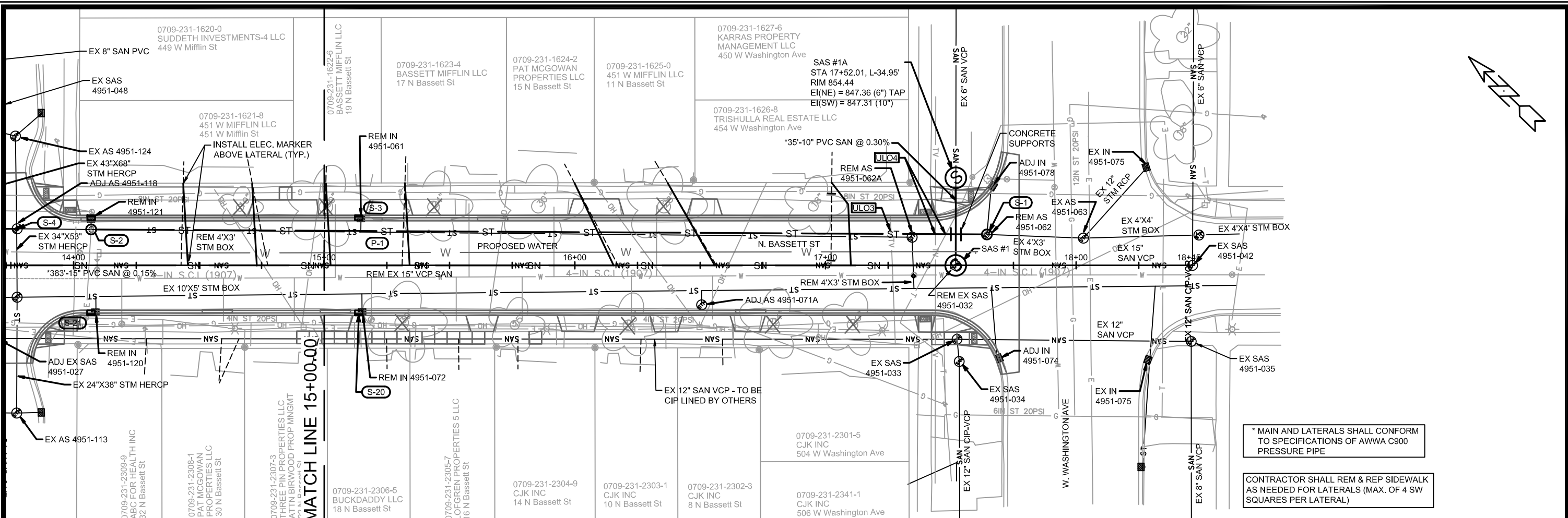
N. BASSETT ST. RECON 2019

CITY OF MADISON



11987

U-1



* MAIN AND LATERALS SHALL CONFORM TO SPECIFICATIONS OF AWWA C900 PRESSURE PIPE

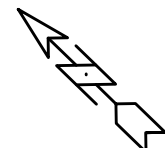
CONTRACTOR SHALL REM & REP SIDEWALK AS NEEDED FOR LATERALS (MAX. OF 4 SW SQUARES PER LATERAL)

REPRINT FOR WATER REV.	6-14-19	KDF
MARK	REVISION	DATE
11987	11987	U-2

11987
MADISON, WI
CONTRACT NO: 8299

UTILITY PLAN AND PROFILE
N. BASSETT ST. RECON 2019
CITY OF MADISON

11987
U-2



10+75.6, -5.6LT
INSTALL TEMP FLUSHING
DEVICE ON THIS END,
THEN CONNECT TO EX 10-IN WM

0709-231-1421-2
LEXINGTON APTS
ATTN H & R MANAGEMENT
454 W Dayton St

10+75.6, -4.9LT
CUT OFF EX 4-IN WM
AT ABANDONMENT

0709-231-1529-4
PARK PLACE PROF
ATTN BOARDWALK
210 N Bassett St

INSULATION (TYP)

WN4
1-IN

WN4
1-IN

WN11
1-IN

WN4
1-IN

WN4
1-IN

13+28.9, -6.0LT
CONNECT TO EX 10-IN WM

14+09.4, -4.9LT
INSTALL TEMP FLUSHING
DEVICE ON THIS END,
THEN CONNECT TO EX 10-IN WM

WN8

14+09.4, -2.5LT
CUT OFF EX 6-IN WM
AT ABANDONMENT
SALVAGE EX REDUCER

WN2
1-IN

WN2
1-IN

WN2
1-IN

13+28.9, -4.1LT
CUT OFF EX 6-IN WM
AT ABANDONMENT
SALVAGE EX REDUCER

WN2
1-IN

WN8

0709-231-1320-6
NAMM LLC
123 N Bassett St

0709-231-1322-2
702 OLIN AVE LLC
115 N Bassett St

0709-231-1323-0
LONG, DOUGLAS M
113 N Bassett St

0709-231-1324-8
S APARTMENTS 3 LLC
111 N Bassett St

0709-231-1326-4
DAY INVESTMENTS LLC
450 W Mifflin St

0709-231-1325-6
DAY INVESTMENTS LLC
454 W Mifflin St

0709-231-1620-0
SUDDETH INVESTMENTS-4 LLC
449 W Mifflin St

0709-231-1621-8
451 W MIFFLIN LLC
451 W Mifflin St

0709-231-2406-3
MADISON
COMMUNITY COOP
122 N Bassett St

0709-231-2405-5
LONG, DOUGLAS M
% NAMM LLC
120 N Bassett St

0709-231-2404-7
ELLICKSON LIVING TRUST
WILLIAM G ELLICKSON
118 N Bassett St

0709-231-2403-9
ELLICKSON LIVING TRUST
WILLIAM G ELLICKSON
114 N Bassett St

0709-231-2402-1
% T A
110 N B
110 N B

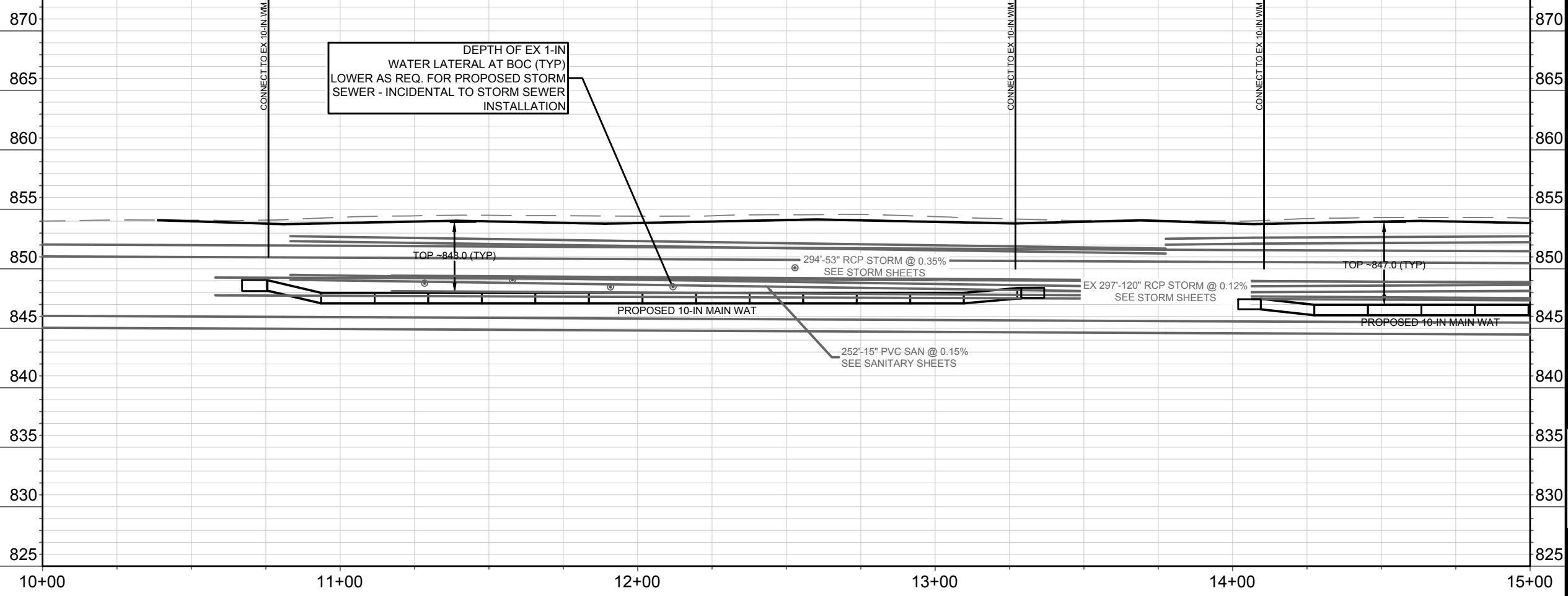
0709-231-2401-3
SUDDETH INVESTMENTS-5 LLC
502 W Mifflin St

0709-231-2309-9
ABC FOR HEALTH INC
32 N Bassett St

0709-231-231-2
PAT MCGO...
PROPERTY
30 N Bassett

0709-231-231-3
THREE PIN
ATTN BIRWA
22 N Bassett

MATCH LINE STA 15+00



6-14-19	PEH		
ADDENDUM 1			
MARK	REVISION	DATE	BY
Designed By: PEH	Date: 6-6-2019	Scale: 1/16"=1'-0"	W-1

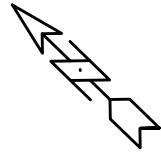
11987
MADISON, DANE, WI

CONTRACT NO: 8299

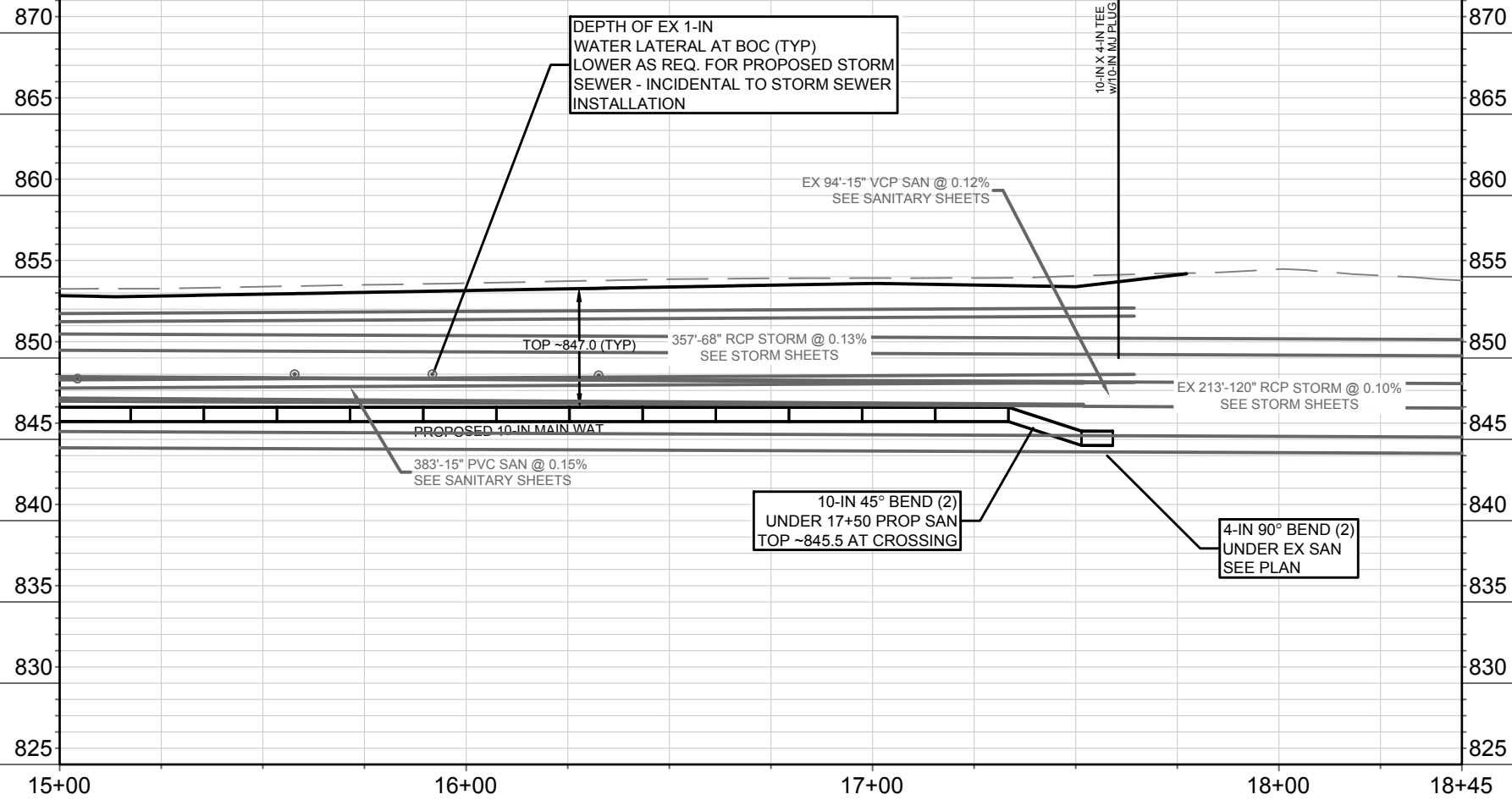
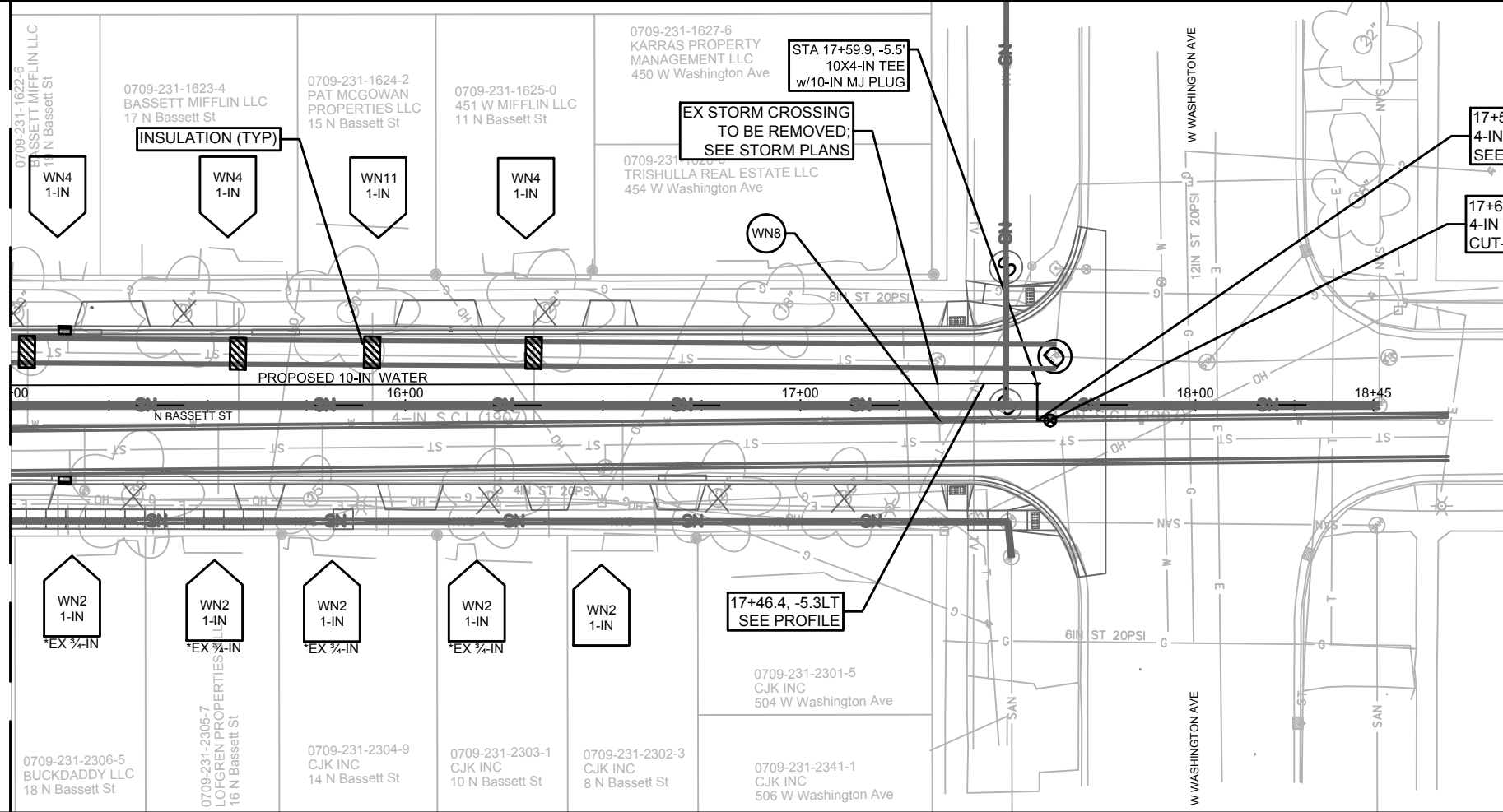
WATER PLAN AND PROFILE
N. BASSETT STREET 2019
CITY OF MADISON



11987
W-1



MATCH LINE STA 15+00



ADDENDUM 1	6-14-19	PEH
MARK	REVISION	DATE
Designed By: PEH	Date: 6-6-2019	Scale: 1"=40 FT
11987		W-2

11987
 MADISON, DANE, WI
 CONTRACT NO: 8299

WATER PLAN AND PROFILE
 N. BASSETT STREET 2019
 CITY OF MADISON



11987
 W-2

CONSTRUCTION NOTES:

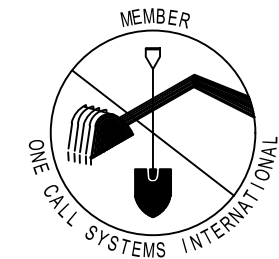
- | | |
|---|--|
| <ol style="list-style-type: none"> CONSTRUCT NEW WATER MAIN 6.0' BELOW FINISHED GRADE, UNLESS OTHERWISE NOTED. INSULATE MAIN WITH POLYSTYRENE BOARD AT STORM SEWER CROSSINGS OR OTHER AREAS IDENTIFIED BY ENGINEER AS HAVING INADEQUATE COVER. VERIFY SIZE OF EXISTING WATER SERVICES AND RECONNECT SERVICES AS INDICATED. MINIMIZE DISRUPTION OF SERVICE TO CUSTOMERS. NOTIFY PER CONTRACT REQUIREMENTS OF ANY PLANNED WATER OUTAGE. THE EXISTING UTILITIES SHOWN ON THIS PLAN REPRESENT THE BEST INFORMATION AVAILABLE TO THE WATER UTILITY AT THE TIME OF PLAN PREPARATION. CONTRACTOR IS RESPONSIBLE OR HAVING EACH UTILITY LOCATED PRIOR TO COMMENCING WORK. | <p>WN-1 REPLACE THE EXISTING LEAD SERVICE WITH A NEW COPPER SERVICE.</p> <p>WN-2 EXTEND AND RECONNECT THE EXISTING COPPER SERVICE TO THE NEW WATER MAIN.</p> <p>WN-3 EXISTING SERVICE TO BE ABANDONED WHEN THE WATER MAIN IS CUT OFF.</p> <p>WN-4 DISCONNECT FROM THE OLD WATER MAIN AND RECONNECT THE EXISTING COPPER WATER SERVICE LATERAL TO THE NEW WATER MAIN.</p> <p>WN-5 RELOCATE THE EXISTING FIRE HYDRANT.</p> <p>WN-6 ABANDON WATER VALVE ACCESS STRUCTURE.</p> <p>WN-7 FURNISH AND INSTALL THE NEW TOP SECTION FOR THE WATER ACCESS STRUCTURE.</p> <p>WN-8 ABANDON THE VALVE BOX.</p> <p>WN-9 FURNISH THE DITCH, COMPACTION, AND ALL MATERIALS AND LABOR FOR THE INSTALLATION OF NEW SERVICE LATERAL.</p> <p>WN-10 REMOVE AND SALVAGE EXISTING HYDRANT</p> <p>WN-11 REPLACE THE EXISTING COPPER SERVICE WITH A COPPER SERVICE</p> <p>WN-20+ SEE WATER IMPACT PLAN FOR CONNECTION POINT ISOLATION AND WATER SHUT-OFF NOTIFICATION INFORMATION.</p> |
|---|--|

DISCLAIMER NOTE: UTILITY LOCATIONS SHOWN ARE APPROXIMATE ONLY. IT SHALL BE THE CONTRACTOR'S RESPONSIBILITY TO DETERMINE THE EXACT HORIZONTAL AND VERTICAL LOCATION OF ALL EXISTING UNDERGROUND AND OVERHEAD UTILITIES PRIOR TO COMMENCING WORK.

TO OBTAIN LOCATION OF PARTICIPANTS' UNDERGROUND FACILITIES BEFORE YOU DIG IN WISCONSIN

CALL DIGGERS HOTLINE TOLL FREE
811 OR 1-800-242-8511
FAX-A-LOCATE 1-800-338-3860
TDD (FOR HEARING IMPAIRED) 1-800-542-2289

WIS. STATUTE 182.0175 (1974) REQUIRES MIN. OF 3 WORK DAYS NOTICE BEFORE YOU EXCAVATE.



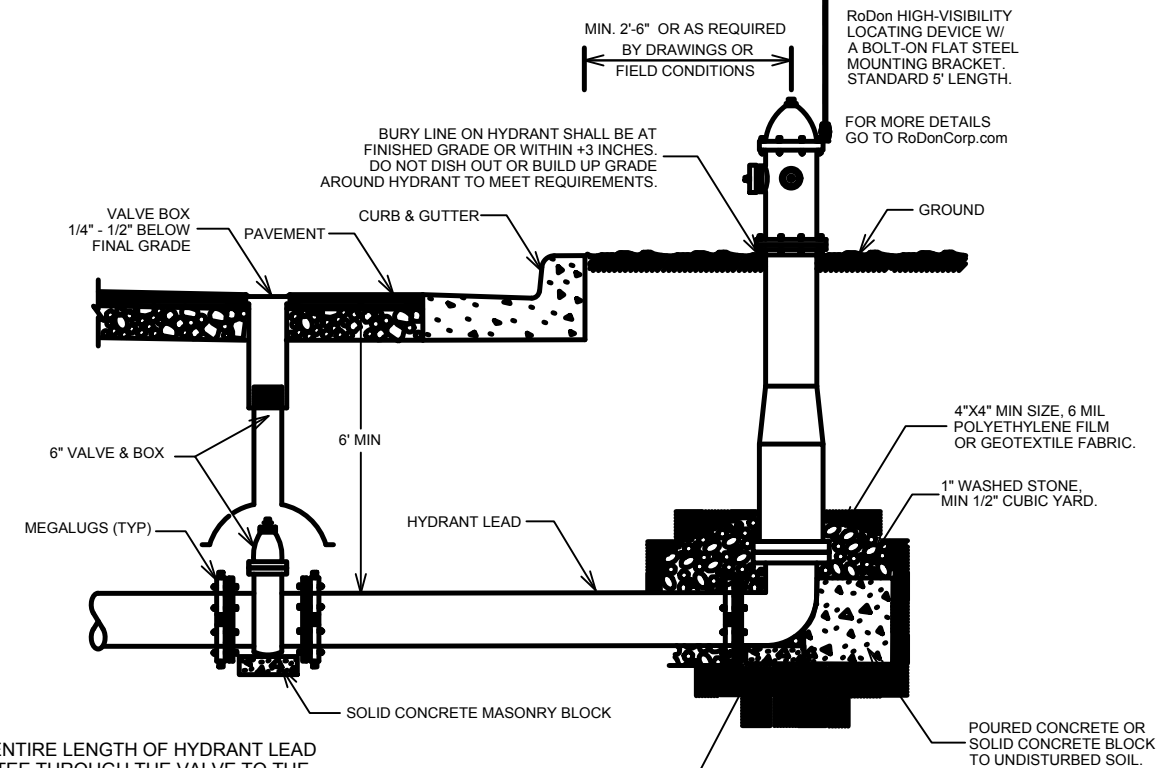
ESTIMATE OF CONTRACTOR MATERIALS:

WATER ASSETS	TOTAL
4-IN PIPE (LF)	<10
10-IN PIPE (LF)	620
POLY WRAP	700
4-IN VALVE & BOX	1
10-IN X 4-IN TEE	1
10-IN 45 BEND	2
4-IN 90 BEND	2
4-IN MJ PLUG	1
6-IN MJ PLUG	2
4-IN MJ CAP	1
TEMP FLUSHING FIXTURE	2
2-IN STYROFOAM (LF)	80
1-IN COPPER PIPING	AS REQ

PART VII - WATER MAINS AND SERVICE LATERALS

DETAIL DRAWING NO. 7.04

REVISED: 12/2015



NOTE:

- RESTRAIN ENTIRE LENGTH OF HYDRANT LEAD FROM THE TEE THROUGH THE VALVE TO THE HYDRANT AS SPECIFIED USING JOINT RESTRAINTS PER SECTION 703.10

CITY OF MADISON
WATER UTILITY

NOT TO SCALE

TYPICAL HYDRANT INSTALLATION

6-14-19	PEH	DATE	BY
ADDENDUM 1		REVISION	
MARK		DESIGNED BY: PEH	DATE: 6-6-2019
		Scale: #####	W-3

11987
MADISON, DANE, WI
CONTRACT NO: 8299

MSN WAT MATERIALS
N. BASSETT STREET 2019
CITY OF MADISON



11987
W-3